

Tanda Development

Introduction

Brief company and product introduction

www.tandasystem.com



CONTENTS

- 01. Who we are
- 02. Our Advantage
- 03. Systems & Products
- 04. Project Cases



01

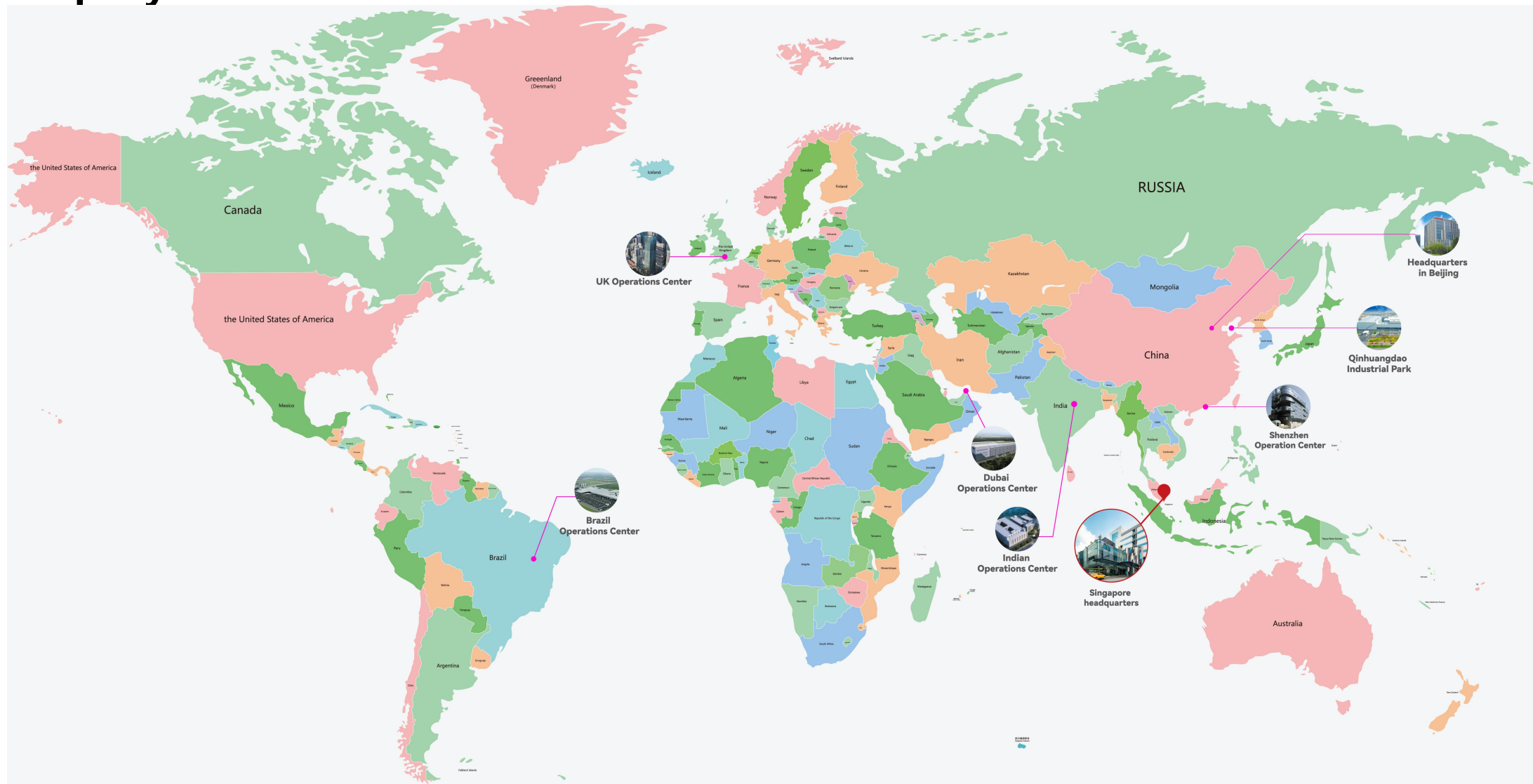
PART ONE

About Us





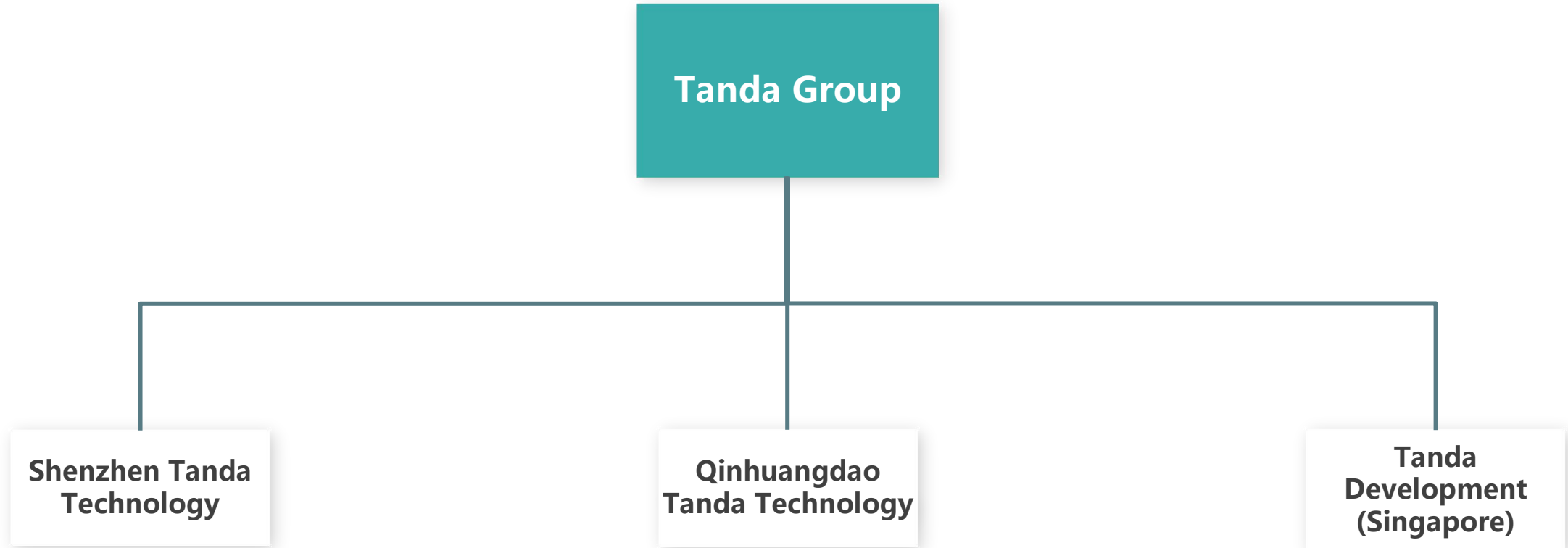
Company Profile



Secure your future.



Company Structure



**Beijing
Production
Base**





Singapore Training Center



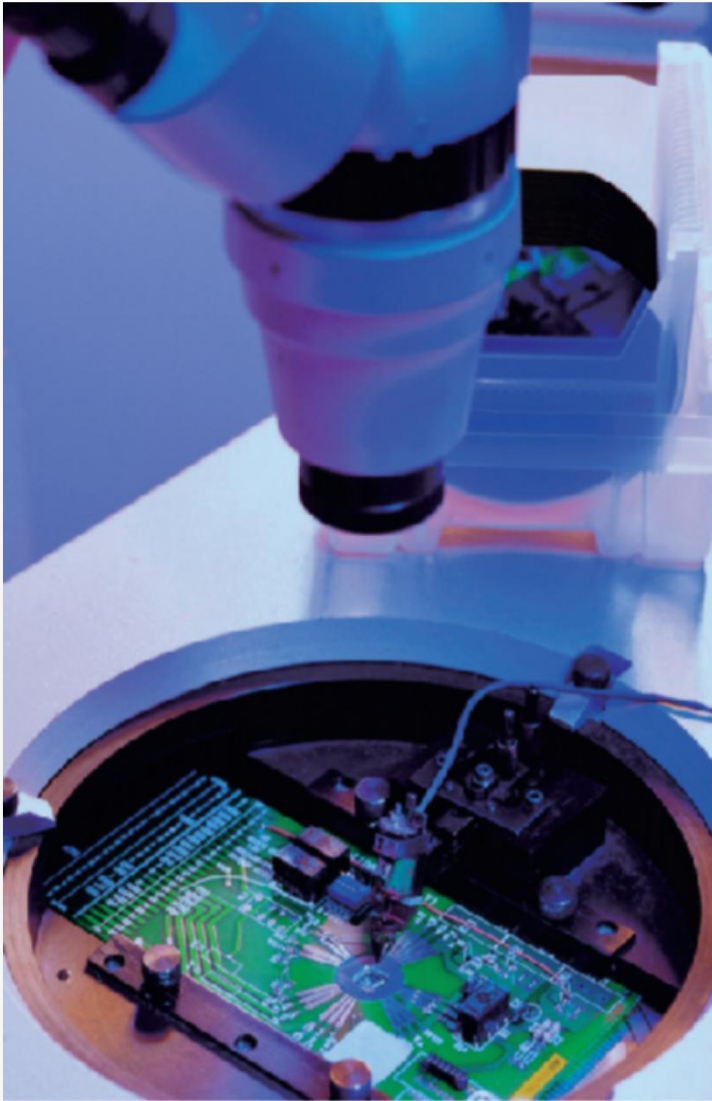


02

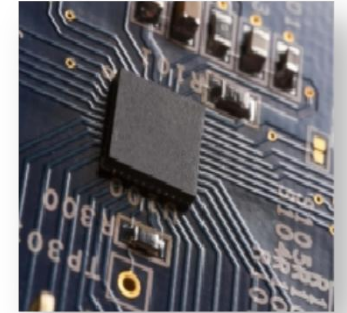
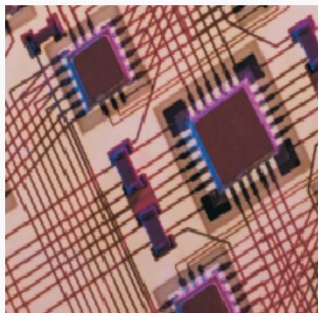
PART TWO

Our Advantage





Emergency Safety Electronic Products R&D Center



20 intelligent hardware invention patents have been authorized, and 104 platform and big data invention patent applications have been applied for and accepted. Currently, more than 390 invention patents, utility model patents, and software copyrights have been authorized.

Manufacturing Capabilities

- Factory area of 56000 square meters
- 27 advanced automated production lines
- Production capacity of 300,000 control panels
- Production capacity of 80 million+ Intelligent terminal





03

PART THREE

Systems & Products



Domestic Products

The total number of global service projects exceeds 600,000

More than 390 patents and software publications

Fire protection electronics market share industry TOP1

Fire Alarm Products



Fire alarm and linkage system
Fire emergency broadcast system
Integrated supporting system

Gas Detection Products



Industrial and commercial gas
detectors
Household gas detectors
Toxic and hazardous detectors

Electrical Safety Products



Electrical fire monitoring system
Residual current detection
Cable temperature detection

Evacuation Products



Emergency lighting and evacuation
instructions
Centralized power supply and
centralized control
Self-contained power supply and
centralized control

New Energy Safety Products



Electrochemical composite detection
device
Gas fire extinguishing control system
Pipeline/cabinet heptafluoropropane
fire extinguishing device

Overseas Products



TX7 Addressable fire alarm system



TX3 Addressable fire alarm system



LPCB



CPR



TXC7 Conventional fire alarm system



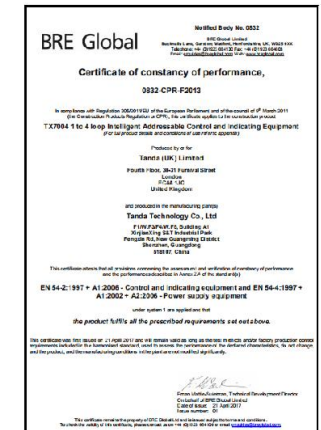
Wireless fire alarm series



TN7 and TG7 Fire broadcasting telephone system



CE



BRE

TX7 Series Addressable Fire Alarm System

LPCB Certified
EN54 Standards Compliance

When it comes to fire safety, TNA Addressable systems are an integrated solution to prevent fire incidents. They have the power to take on the largest projects and the flexibility to deliver tailored solutions to each facility's unique requirements. System-wide addressability makes them easier to install and maintain, and helps pinpoint alarm locations for a more effective response. These systems provide real-time safety for your lives and assets as well as are fully compatible with 3rd party management systems.



Specifications

Model	Loops	Front End Devices	Connectivity
TX7002	1/2	254/508	USB/ Ethernet/ CAN/ RS485/ Fiber Optics
TX7004	1/2/4/6(standalone)	254/508/1016/1524	
TX7008	6/8/10(Standalone)	1524/2032	
TX7008R	4/6/8/10(Standalone)	1016/1524/2032	



Specifications

Model	Loops	Front End Devices	Features
TX3016NL	1-16	3872(MAX)	Smart Linkage Self Inspection User friendly Interface Modular Switching Power supply

TX3 Series Addressable Fire Alarm System

TX3016E Intelligent Fire Alarm Control Panel (FACP) is the new-generation fire alarm control unit designed by our company for small and medium projects. It is wall-mounted type and has the advantages of powerful function, high reliability and flexible configuration.

TX3016E intelligent fire alarm control panel with rack type and console type, and its standard configuration includes the main control unit, smart manual-start panel, multiline control panel, power supply, and printer. The main control unit includes main circuit board, light circuit board, key operation circuit board, loop card, communication card and other functional expansion cards.

TX3003M

Wireless Fire Alarm System

Lora Communication
Wireless/Standalone Usage

Next-generation Foslink Technology Intelligent wireless Fire Alarm system. Dual connectivity (wired and wireless) to improve and extend the monitoring area for small and medium size projects. Wireless systems are used for homes, villas, shops, motel, banks and also for historical building to preserve the originality.



Specifications

Model	Product Name	Voltage	Connection Mode
TX3003M	Wireless Control Panel	AC220V	Foslink
JTY-GF-TX3190C-F	Wireless Smoke Detector	DC 3.0V	Foslink
JTW-ZOF-TX3180	Wireless Heat Detector	DC 3.0V	Foslink
TW3232	Wireless Sounder Strobe	DC 3.0V	Foslink
J-SAP-M-TW3240	Wireless Manual Call Point	DC 3.0V	Foslink
TW3221	Wireless I/O module	DC 3.0V	Foslink



TXC7 Series Conventional Fire Alarm System

Specifications

Model	Partition Support	Fire Alarm Output	Fault Output	Bell Output	Auxiliary power output
TXC7002	2	1	1	1	1
TXC7004	4	1	1	2	2
TXC7008	8	1	1	2	2
TXC7016	16	1	1	2	2

The conventional fire alarm system is designed according to the EN54-2 standard, and can be connected with sound and light TXC7301, hand alarm TXC7141, smoke detector TXC7101, heat detector TXC7111 and other equipment. This system is easy to install and debug, and easy to operate.

Main Characteristics:

1. Flexible configuration of fire alarm output points
2. Practical Test mode
3. Equipped with modular switching power supply
4. Equipped with reliable lithium iron phosphate battery

TG7 Fire Broadcast & TN7 Telephone system

Clear and quick response during fire incident

The fire emergency broadcast system is a special one for fire communication. In the event of fire, it can make notification and evacuation fast. TG7100 Fire Emergency Broadcast System constitutes an emergency broadcast system together with power amplifiers, and speakers. TN7100 Addressable Fire Telephone System is a bus communication system special for fire protection system. It is suitable for hotels, restaurants, office buildings, teach buildings, banks, warehouses, libraries, etc,. The system can constitute a fire telephone system together with TN7000 Fire Telephone Control Panel, TN7101 Fire Telephone Mobile Handset, TN7300 Addressable Fire Telephone Jack Socket.






Specifications

Model	Product Name	Voltage	Connection Mode
TN7000	Fire Telephone Control Panel	DC24V	Non-polarized telephone bus
TN7100	Addressable Fire Extension Telephone	DC24V	Non-polarized telephone bus
TN7101	Fire Telephone Mobile Handset	DC24V	Non-polarized telephone bus
TN7300	Addressable Fire Telephone Jack Socket	DC24V	Non-polarized telephone line
TG7100	Broadcast Control Panel	DC24V	RS485
TG7300	Power Amplifier	220VAC	RS485

Product Certification (Pending)


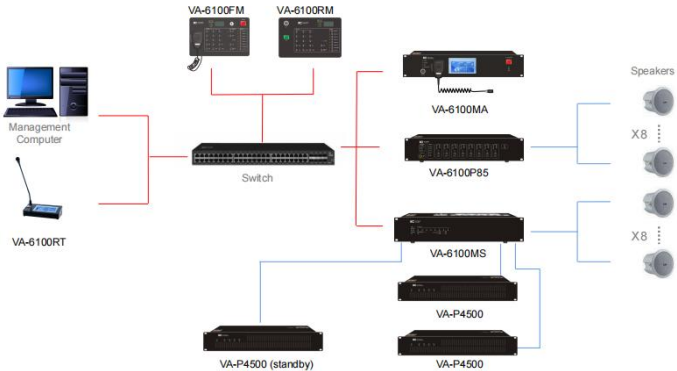
Product Certification (Pending)

	<p>TX7001 1 Loop Panel</p>	<p>CE/CPR</p>
	<p>Wireless System</p>	<p>CE/CPR</p>
	<p>Conventional System</p>	<p>CE/CPR</p>



Product Certification (Pending)



	TXU7 Series System	UL
	Emergency & Broadcast System	CE/CPR

04

PART FOUR

Project Cases





Domestic Project



Hengfeng Country Garden Guiyang Center
(380 meter)



Shenzhen Hongtu Innovation Plaza
(262 meters)



Chengdu Global Center building
(1.76 million square meters)



Handan Global Center (201 meters)



Xiamen Strait Pearl Plaza (258 meters)



Lanzhou Center Building (229 meters)



Overseas Project



PSA Building



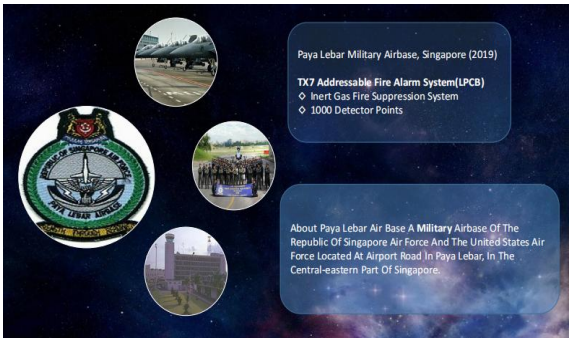
Sky villa apartment Cambodia



Singapore TEKKA Shopping Plaza



Valencia Hills Philippines



Singapore Air Force Base



Singapore NUS University



Istanbul Kemitax Chemical Factory



Gezhouba Argentina
Hydropower Project

New Energy Safety-Energy Storage Fire Protection Project Case



Shenzhen BYD Energy Storage Project



National Wind, Solar, Storage and Transmission
Demonstration Project Energy Storage Power Station



Southern Power Grid Datang Leizhou
Power Station Energy Storage



Huazi Technology Lengshuitan Energy
Storage Power Station



China Resources Power Guangxi Shared
Energy Storage Power Station



Xinxiang Yanjin Wind Farm

THANK YOU

info@tandasystem.com

